

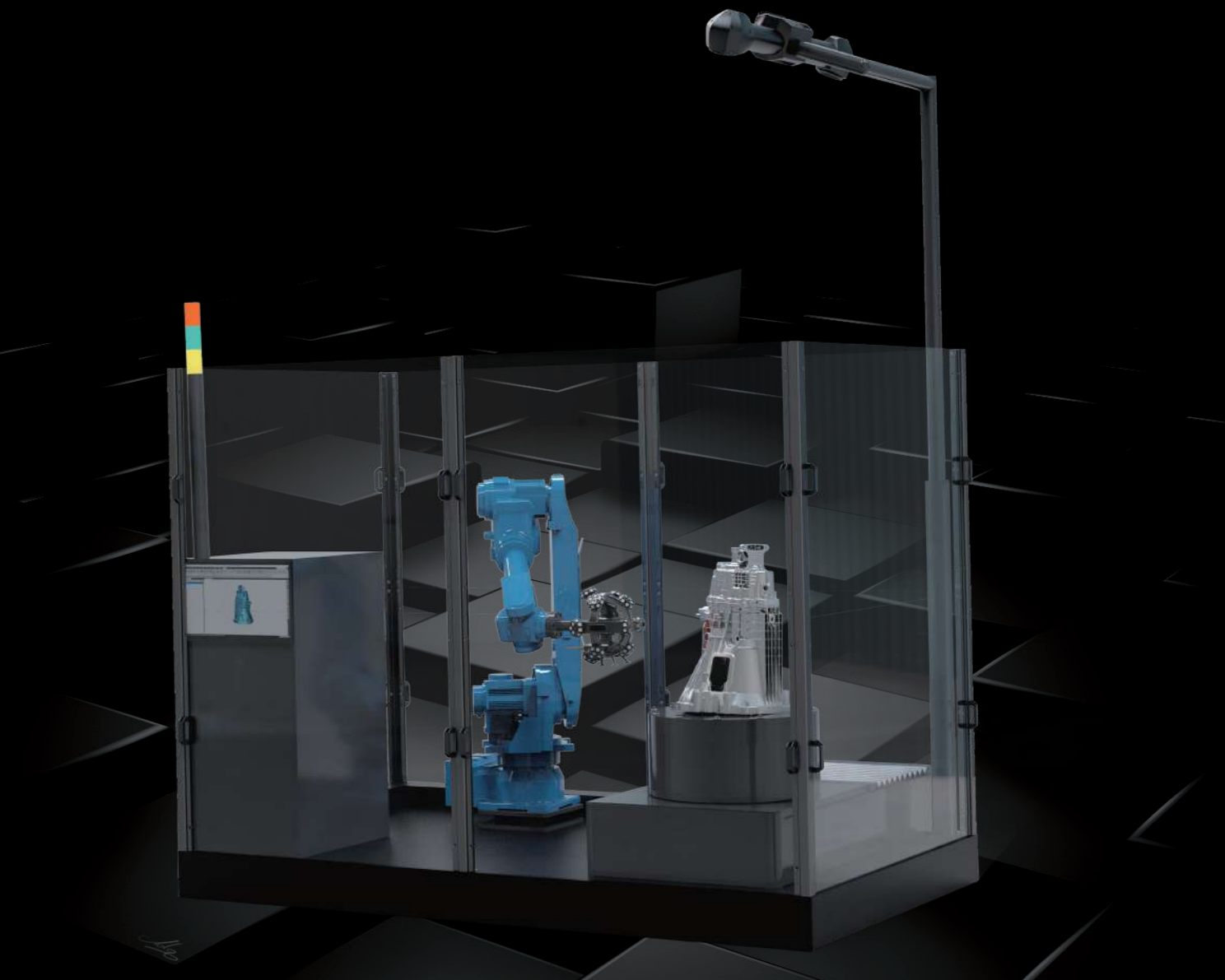
Technical Parameter

| Type | | AutoScan-T42 |
|--|---------------------|---|
| Scan mode | Ultra-fast scanning | 17 blue laser crosses |
| | Hyperfine scanning | 7 blue parallel laser lines |
| | Deep hole scanning | 1 extra blue laser line |
| Laser lines in total | | 42 |
| Accuracy ⁽¹⁾ | | 0.025 mm |
| Measurement rate up to | | 1,900,000 measurements/s |
| Scanning area | | 310 mm × 350 mm |
| Laser class | | CLASS II (eye-safe) |
| Resolution | | 0.020 mm |
| Volumetric ⁽²⁾ accuracy | 10.4 m ³ | 0.064 mm |
| | 18.0 m ³ | 0.078 mm |
| Volumetric accuracy <small>(With MSCAN-L15 photogrammetry system)</small> | | 0.044 mm + 0.015 mm/m |
| Stand-off distance | | 300 mm |
| Depth of field | | 320 mm |
| Output formats | | .stl, .ply, .obj, .igs, wrl, .xyz, .dae, .fbx, .ma, .asc or customized |
| Operating temperature range | | -10°C ~ 40°C |
| Interface mode | | USB 3.0 |
| Patents | | CN204329903U, CN104501740B, CN104165600B, CN204988183U, CN204854633U, CN204944431U, CN204902788U, CN105068384B, CN105049664B, CN204902784U, CN204963812U, CN204902785U, CN204902790U, CN106403845B, CN209197685U, CN209263911U, CN106500627B, CN106500628B, CN206132003U, CN211121096U, US10309770B2, KR102096806B1 |

(1) ISO 17025 accredited: Based on VDI/VDE 2634 Part 3 standard and JJF 1951 specification, probing error (size) (PS) performance is evaluated.
 (2) ISO 17025 accredited: Based on VDI/VDE 2634 Part3 standard and JJF 1951 specification, sphere spacing error (SD) performance is evaluated.

AUTOSCAN – T 3D System

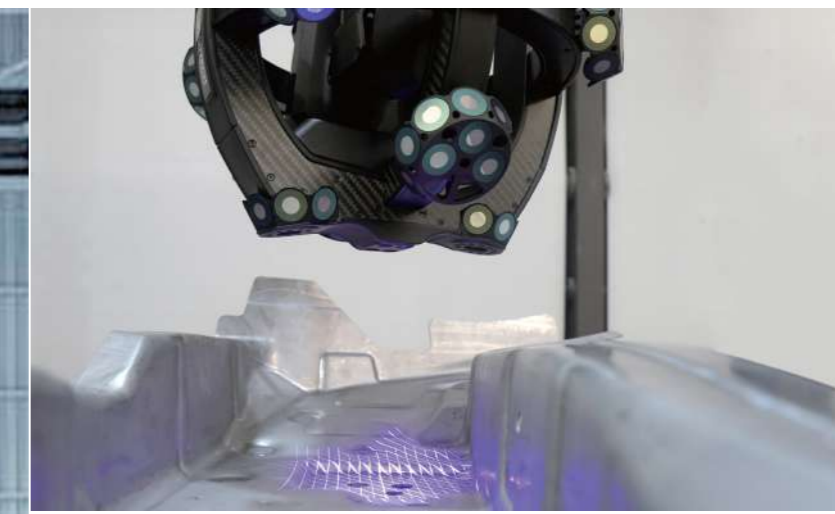
Optical Automated Inspection for Intelligent Production Lines



AUTOSCAN-T

AutoScan-T42 automated 3D system is a new upgrade for intelligent automatic inspection. It is specially designed for automated quality control in shop-floor conditions, facilitating enterprises to achieve the optimum matching between cost and efficiency.

AutoScan-T42 conducts non-destructive scanning without attaching markers. Its seamless connection with production line greatly contributes to the reduction the workload. The military-grade manufacturing quality presents strong anti-interference and high adaptation to complex and harsh workshop environment. It can be extensively used in national defense, energy, 5G, mold manufacturing, etc., users can easily operate the system owing to one-click start, offline programming, and compatibility with 3D software.

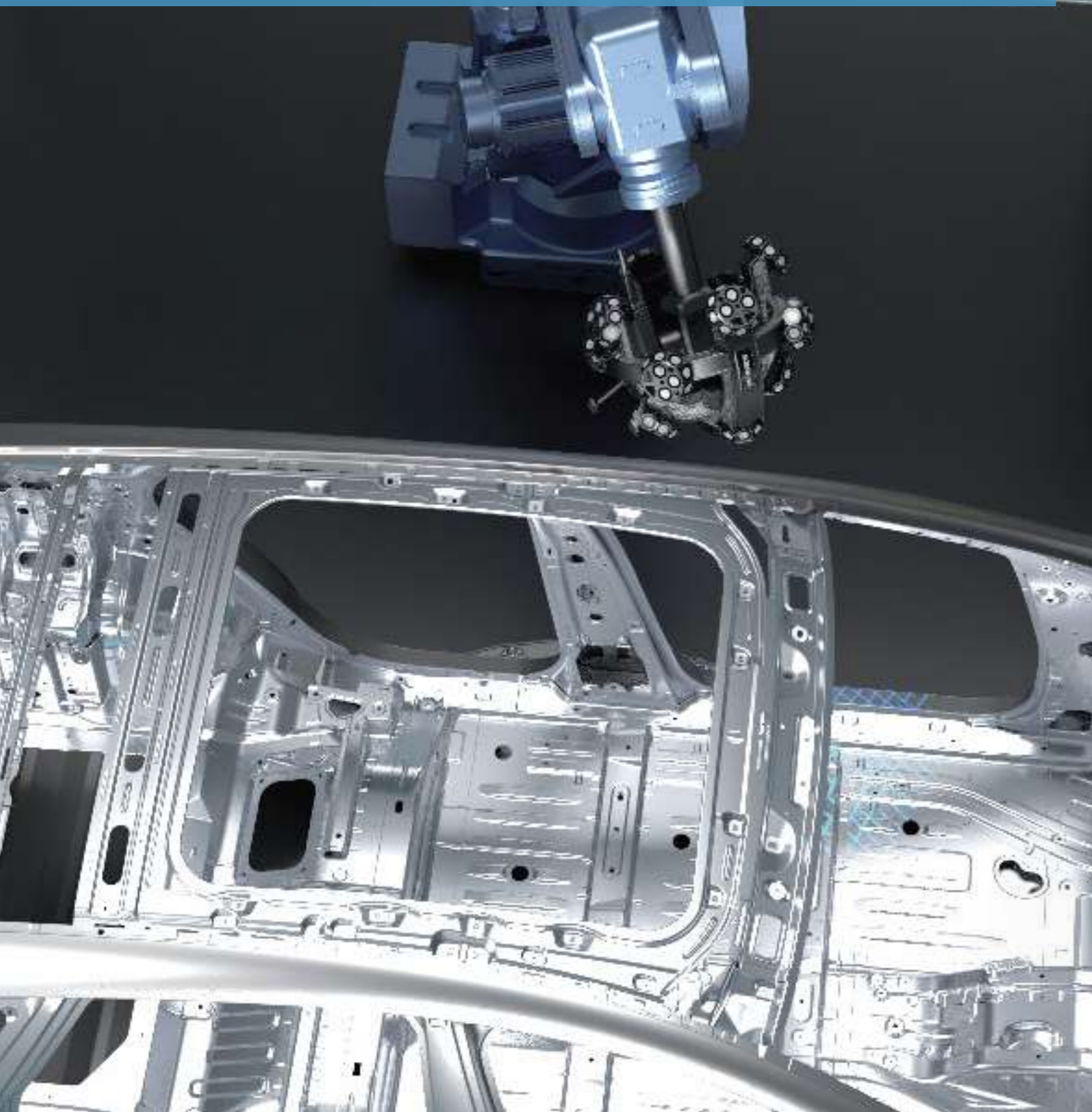


Multiple Configurations

Conjunction with handheld 3D scanner, portable CMM, MSCAN photogrammetry system, rotary platforms, and guide rails, realize simultaneous optical tracking and scanning and personalized solutions.

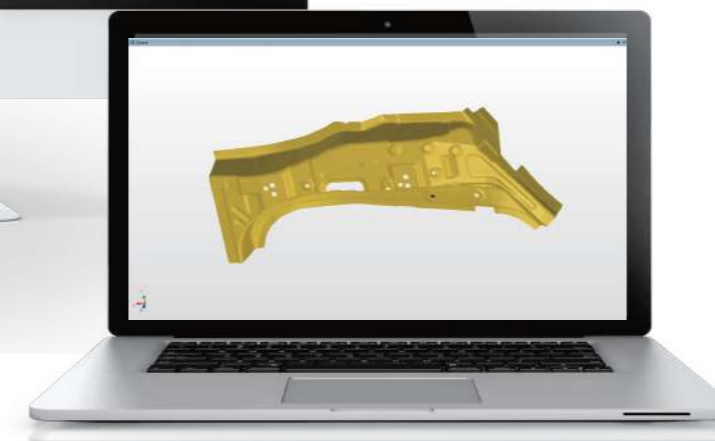
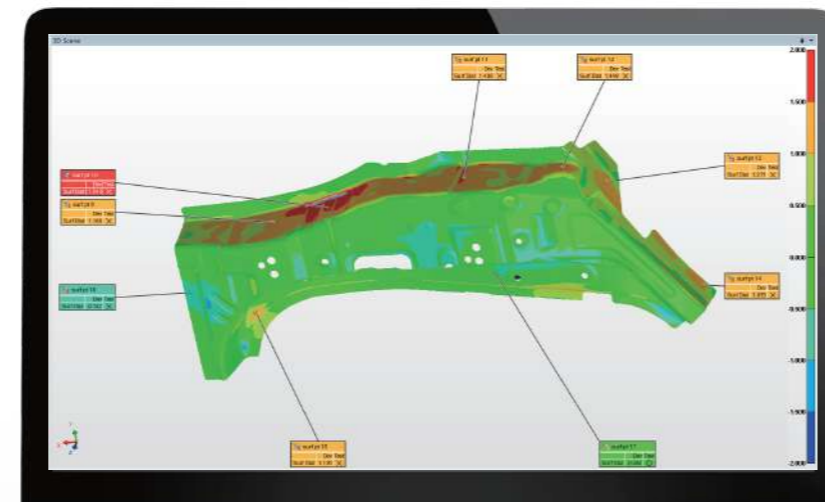
Speed up Precise Inspection

With adoptions of blue laser and synchronous tracking technologies, it reaches up to 1,900,000 measurements/s and accuracy of 0.025 mm. Efficient and flexible automated manufacturing can be achieved without being affected by external factors.



Work Seamlessly with Production Line

Based on automatic optical tracking and seamlessly integrated into production line, it is designed for online batch inspection and enhances iterative efficiency of the production process greatly.



Military-grade Quality

Being unsusceptible to temperature, vibration, dust, etc., the military-grade design presents superior adaptability in harsh industrial environment.

Simple Operation

Due to one-click start, offline programming and automatically generating inspection, it enables simple operation for users, regardless of their experience, to easily finish the measurement.

