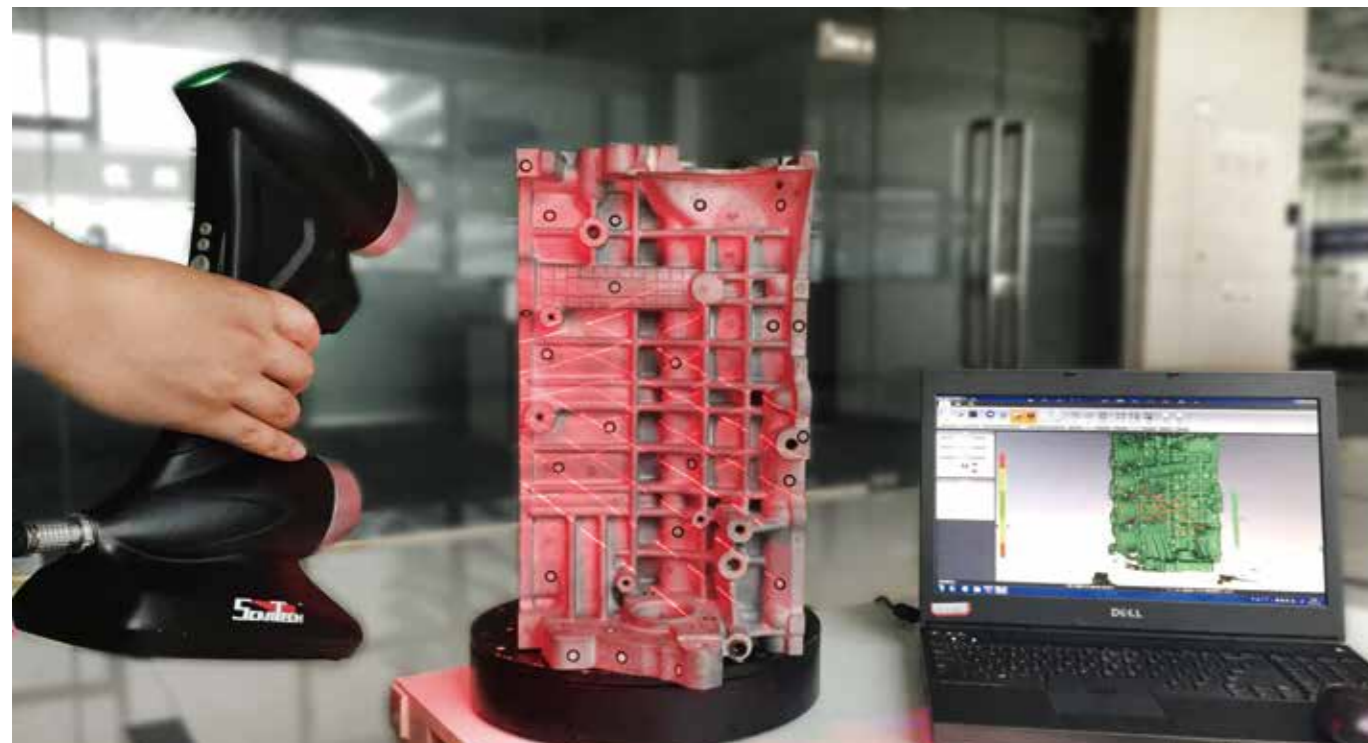


PRINCE775 Technical Parameter

| | | |
|----------------------------------|---|-----------------------------|
| Scan Mode | mode R | mode B |
| Laser source | 7 red laser crosses (+ 1 Extra red laser) | 5 blue parallel laser lines |
| Scan rate | 480000 measures/s | 320000 measures/s |
| Laser class | CLASS II (eye-safe) | |
| Resolution | 0.05mm | 0.02mm |
| Accuracy | Up to 0.03mm | |
| Volumetric accuracy | 0.02mm+0.06mm/m | 0.01mm+0.06mm/m |
| Volumetric accuracy (with MSCAN) | 0.02mm+0.025mm/m | 0.01mm+0.025mm/m |
| Depth of field | 250mm | 100mm |
| Effective working range | 200mm-450mm | 100mm-200mm |
| Output formats | .stl .ply .xyz .dae .fbx .ma .obj .asc | |
| Temp range | -10°C-40°C | |

PRINCE335 Technical Parameter

| | | |
|----------------------------------|---|-----------------------------|
| Scan Mode | mode R | mode B |
| Laser source | 3 red laser crosses (+ 1 Extra red laser) | 5 blue parallel laser lines |
| Scan rate | 265000 measures/s | 320000 measures/s |
| Laser class | CLASS II (eye-safe) | |
| Resolution | 0.05mm | 0.02mm |
| Accuracy | Up to 0.03mm | |
| Volumetric accuracy | 0.02mm+0.08mm/m | 0.01mm+0.08mm/m |
| Volumetric accuracy (with MSCAN) | 0.02mm+0.025mm/m | 0.01mm+0.025mm/m |
| Depth of field | 250mm | 100mm |
| Effective working range | 200mm-450mm | 100mm-200mm |
| Output formats | .stl .ply .xyz .dae .fbx .ma .obj .asc | |
| Temp range | -10°C-40°C | |



Company Introduction

Scantech is a high-tech enterprise specialized in development, research, and sale of intelligent visual inspection equipment and is one of most professional 3D digital equipment supplier.

R&D team developed series of 3D digital equipment with self-owned intellectual property rights leading home and abroad, such as handheld laser 3D scanner, track 3D scanner and global photogrammetry system and so on. Especially PRINCE with capability of capture extreme detail and AXE series with high volumetric accuracy are global creative initiative, and gain great attention and recognition in the 3D digital field.

Furthermore, R&D team establish joint development center with Norway Metronor which is a well-known optical metrology enterprise in Europe.

All-Round 3D Digital Solution

Scantech 3D measurement system offer professional measurement technology for variety industries.

Rapid Prototyping

Reverse Engineering

3D Inspection

3D Visualization

3D Digital Expert



PRINCE 3D SCANNER

Born for Ultra-Detail



HangZhou Scantech Co., Ltd
 6/F, Building 4, No.998, Wenyi West Road, Yuhang District, Hangzhou,
 Zhejiang Province, 310012 China
 Tel: 0086-571-85852597 Fax: 0086-571-85370381
 E-mail: info@sikantech.com
 Website: www.sikantech.com

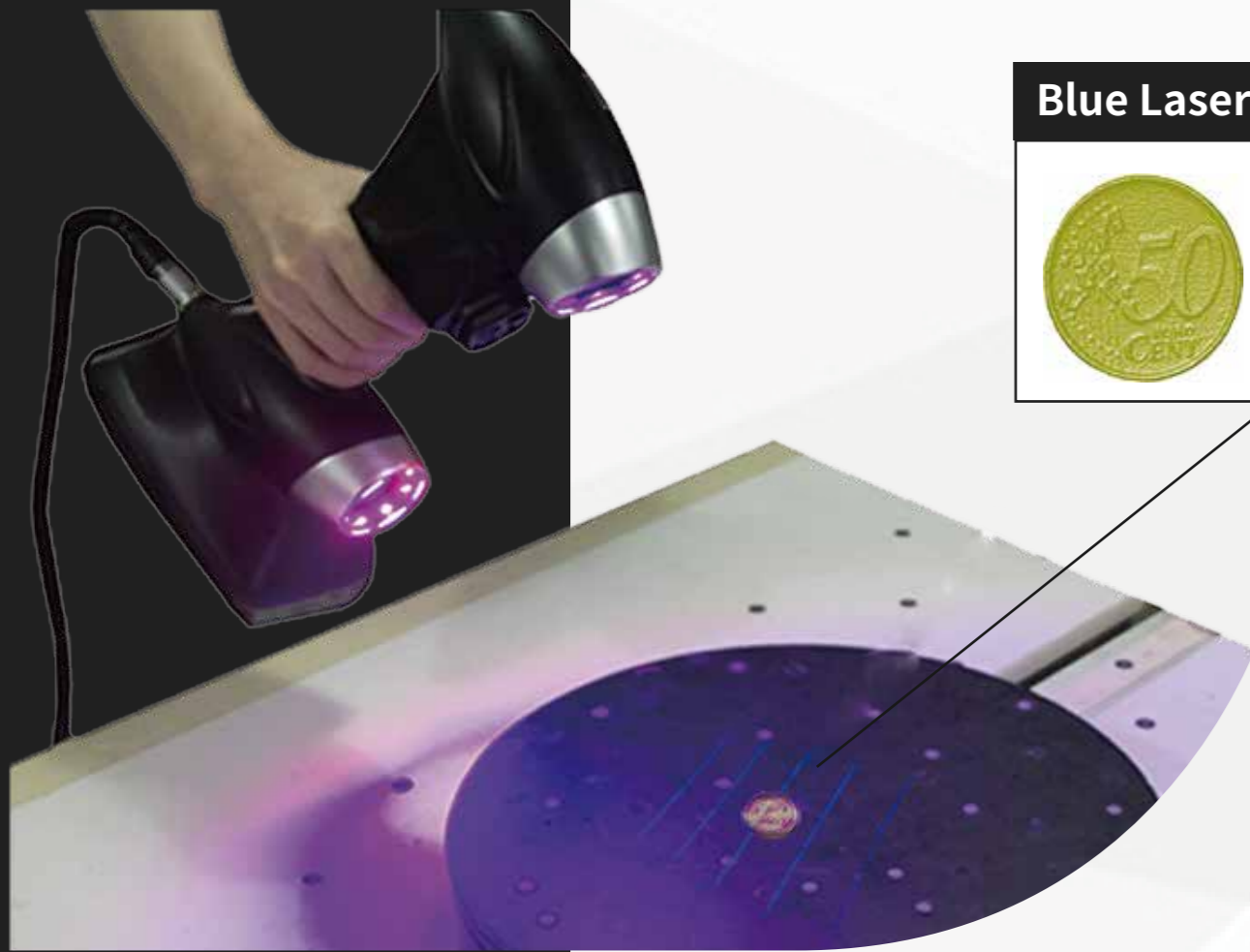
SCANTECH
 3D Digitization Expert

Authorized Distributor

HangZhou Scantech Co., Ltd

Complete Solution For Industrial 3D Measurement

New generation of 3D measurement technology



Blue Laser Scan Mode



Dual Scan Mode

- With Red & Blue laser scan modes
- Two working modes switch rapidly
- Extreme high detail capture
- Easy to scan large and small object

High precision

- Metrology-grade accuracy up to 0.03mm
- Accuracy is insensitive to unstable environment

High Efficiency

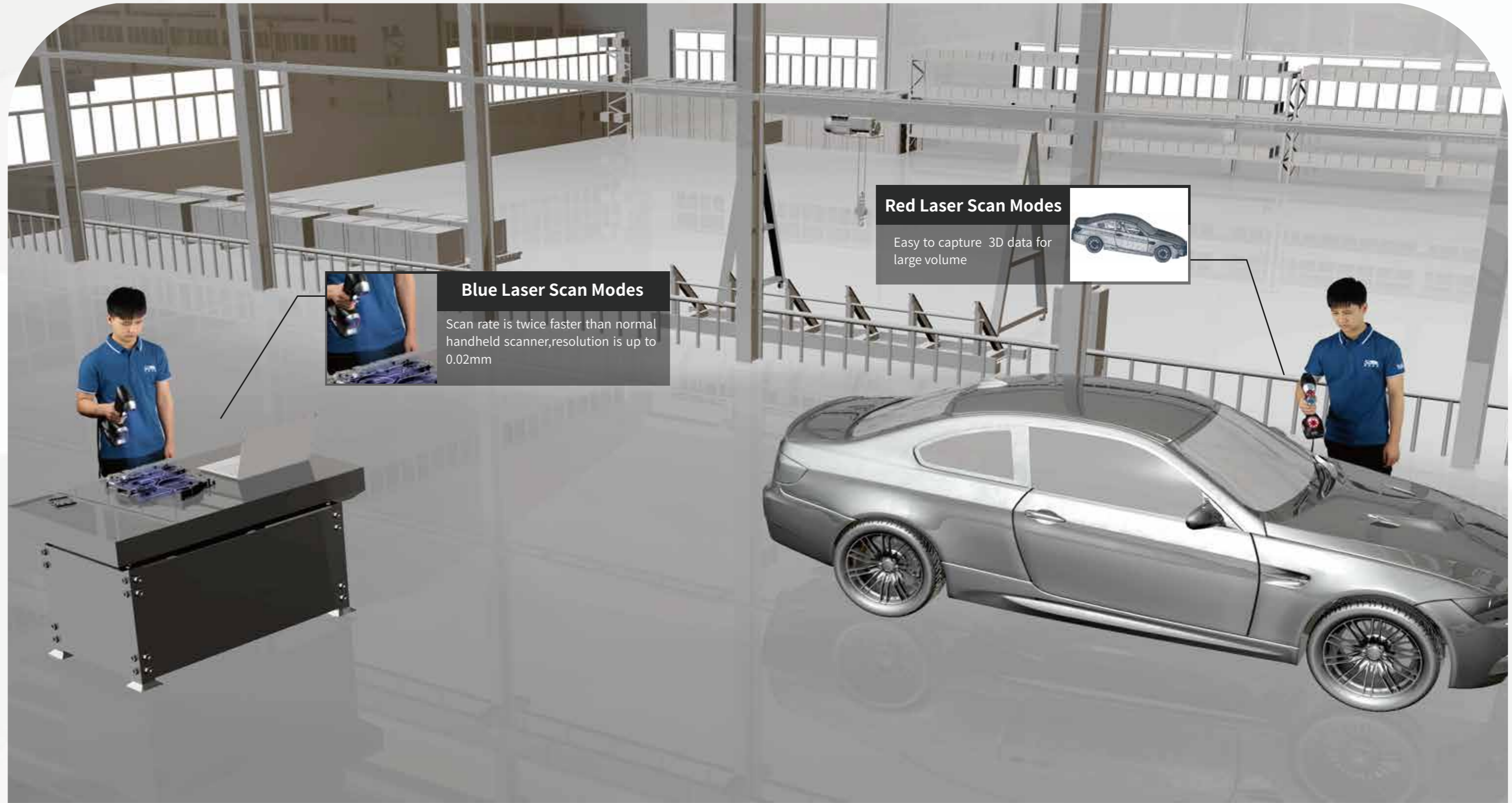
- 3 or 7 red laser crosses
- 5 blue parallel laser lines
- Single red laser line scan deep hole
- 480000 measures/s

Ultra-High Detail

- Resolution is up to 0.02mm
- Equip with 120fps camera
- Scan even smaller than coins clearly

PRINCE

PRINCE 3D scanner with two different working modes. It makes full use of high adaptability of Red laser and ultra-detail capture of blue laser, truly perform a perfect combination of easy operation and high detail.



Red Laser Scan Modes

Easy to capture 3D data for large volume



Blue Laser Scan Modes

Scan rate is twice faster than normal handheld scanner, resolution is up to 0.02mm